

StreetBond® Pavement Coatings Color Guide

StreetBond’s advanced acrylic polymer technology provides superior color stability compared with other technologies such as epoxies. Acrylics are non-yellowing and have good self-cleaning characteristics.

StreetBond Coatings use the highest-quality pigments to inhibit fading caused by the sun’s ultraviolet rays. Cheaper organic pigments can provide acceptable initial color but may fade, resulting in color change and loss of vibrancy.

Traditional

Traditional Colors are warm, earth tone, and neutral colors designed to enhance the aesthetics of public spaces long-term. These colors are commonly used in community areas, universities, public buildings, crosswalks, plazas, and in decorative streetscape designs. The Traditional Colors family provides more subtle and flexible colors that work well together in any pavement coatings project.



Signature

Signature Colors transform the look and feel of a community by providing a custom palette that is designed to achieve a differentiated look. These are non-stocked custom colors used in public areas such as decorative streetscapes, parks, plazas, sports courts, civic centers, and playgrounds to direct pedestrian and vehicular traffic flow.

Solar-Reflective

Solar-Reflective Colors use special technology designed to help cool high-traffic areas without limiting color choices to white or light colors. Solar-Reflective Colors help reduce the Urban Heat Island Effect and the temperature of asphalt surfaces while providing protection against UV damage and asphalt degradation. These colors are typically used in high-traffic areas such as parks, schools, playgrounds, and non-covered areas that experience direct sunlight.

Cycle Lane

These bold, highly reflective colors are designed to delineate public cycle lanes and intersections, helping to keep cyclists safe by visually alerting drivers to the presence of a cycle lane. Cycle Lane Colors are also used in the coating of off-street jogging/cycle paths, bus lanes, school zones, and parking lot markings.



Siplast

1000 Rochelle Blvd.
Irving, Texas 75062
O: 469.995.2200
F: 469.995.2205

In Canada:

201 Bewicke Ave., Suite 208
North Vancouver, BC, Canada V7M 3M7
1.877.233.2338

Customer Service in North America
1.800.922.8800

www.siplast.com
www.streetbond.com

SB

SB

StreetBond Pavement Coatings Color Guide

StreetBond Pavement Coatings Color Guide



StreetBond® Pavement Coatings Color Guide



Traditional



San Diego Buff



Burnt Sienna



Terra Cotta



Brick



Sunset Blush



Marigold



Sierra



Black

NOTE: The color samples in this guide may not precisely match their physical equivalents. Always refer to physical samples before making your color choices.



Taupe



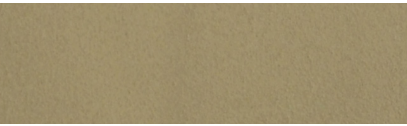
Nutmeg



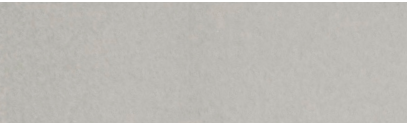
Bedrock



Brown Suede



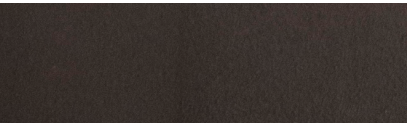
Concrete Gray



Pewter



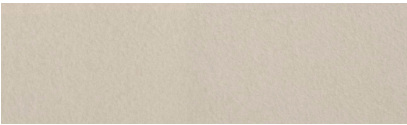
Hunter Green



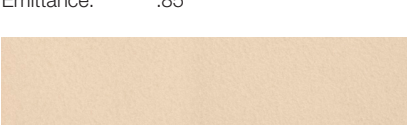
Granite

NOTE: LEED® – an acronym for Leadership in Energy and Environmental Design™ – is a registered trademark of the U.S. Green Building Council.

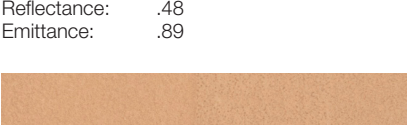
Solar-Reflective



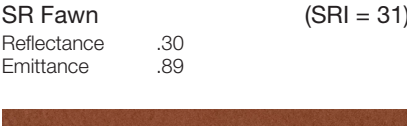
SR Sandstone (SRI = 37)



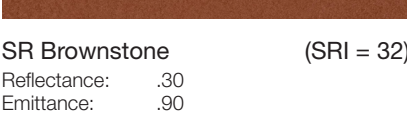
SR Irish Cream (SRI = 55)



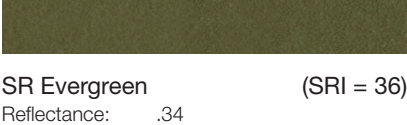
SR Fawn (SRI = 31)



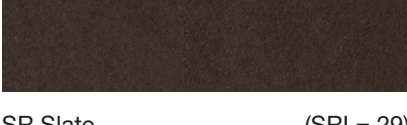
SR Brownstone (SRI = 32)



SR Evergreen (SRI = 36)



SR Slate (SRI = 29)



SR Mustard (SRI = 37)



SR Limestone (SRI = 36)

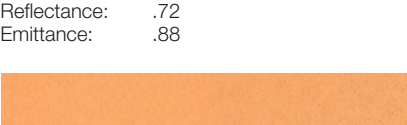
NOTE: Reflectance values are measured in accordance with American Standard of Testing Methodology (ASTM) C1549. Emittance values are measured in accordance with ASTM C1371. The SRI values of StreetBond are calculated according to ASTM E1980-01.



SR Khaki (SRI = 35)



SR White (SRI = 88)



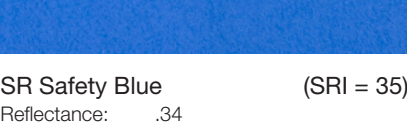
SR Sun Baked Clay (SRI = 51)



SR Terra Cotta (SRI = 34)



SR Safety Blue (SRI = 35)



SR Paprika (SRI = 41)



SR Limestone (SRI = 36)



SR Limestone (SRI = 36)

StreetBond SR Colorants can contribute toward satisfying Credits under LEED v4 and LEED v3.

Signature



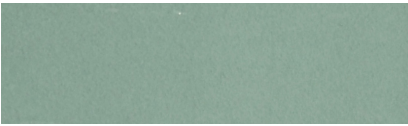
Sandy Beige



Butterscotch



Chestnut Brown



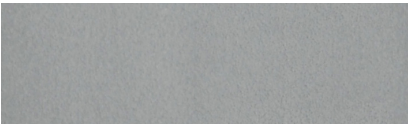
Sea Foam



Sage



Patriot Blue



Gun Metal



Smokey Mauve



Mint



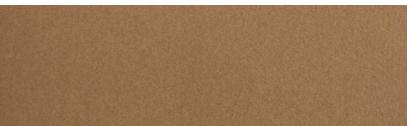
Driftwood



Pumpkin Spice



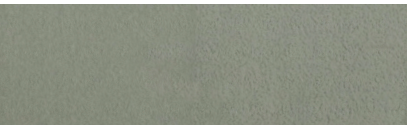
Mocha



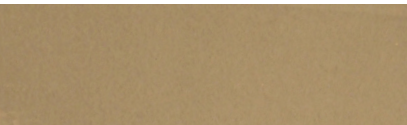
Down To Earth



Avocado



Aqua



Truffle

Cycle Lane



CL Shamrock Green



CL Emerald Green



CL Celtic Green

